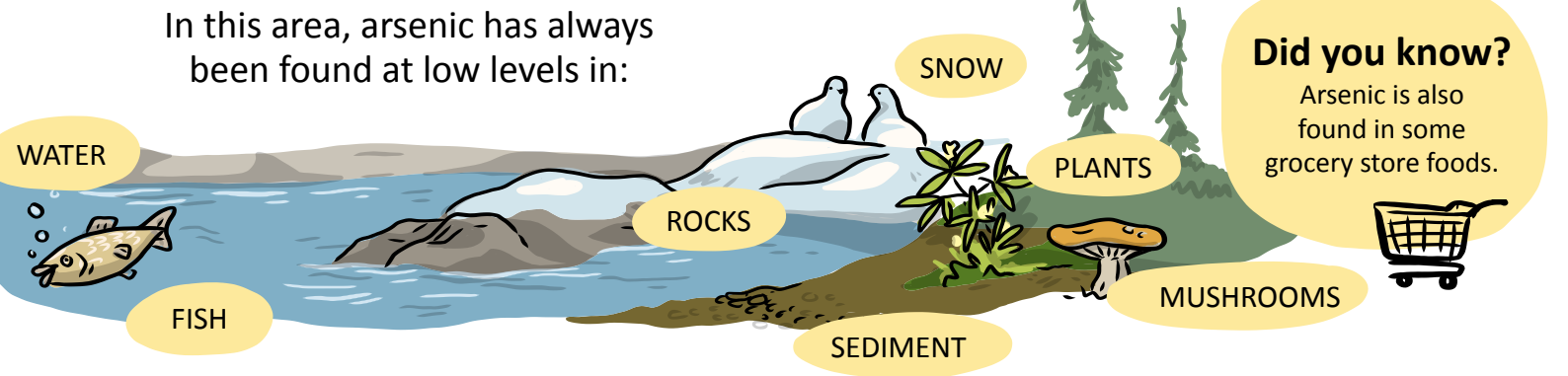


WHERE ARSENIC COMES FROM

In the area surrounding Yellowknife, Ndiłq and Dettah, there is natural arsenic found in the geology.



Arsenic is not from chemicals brought from down south.

Arsenic has always been in the rocks.



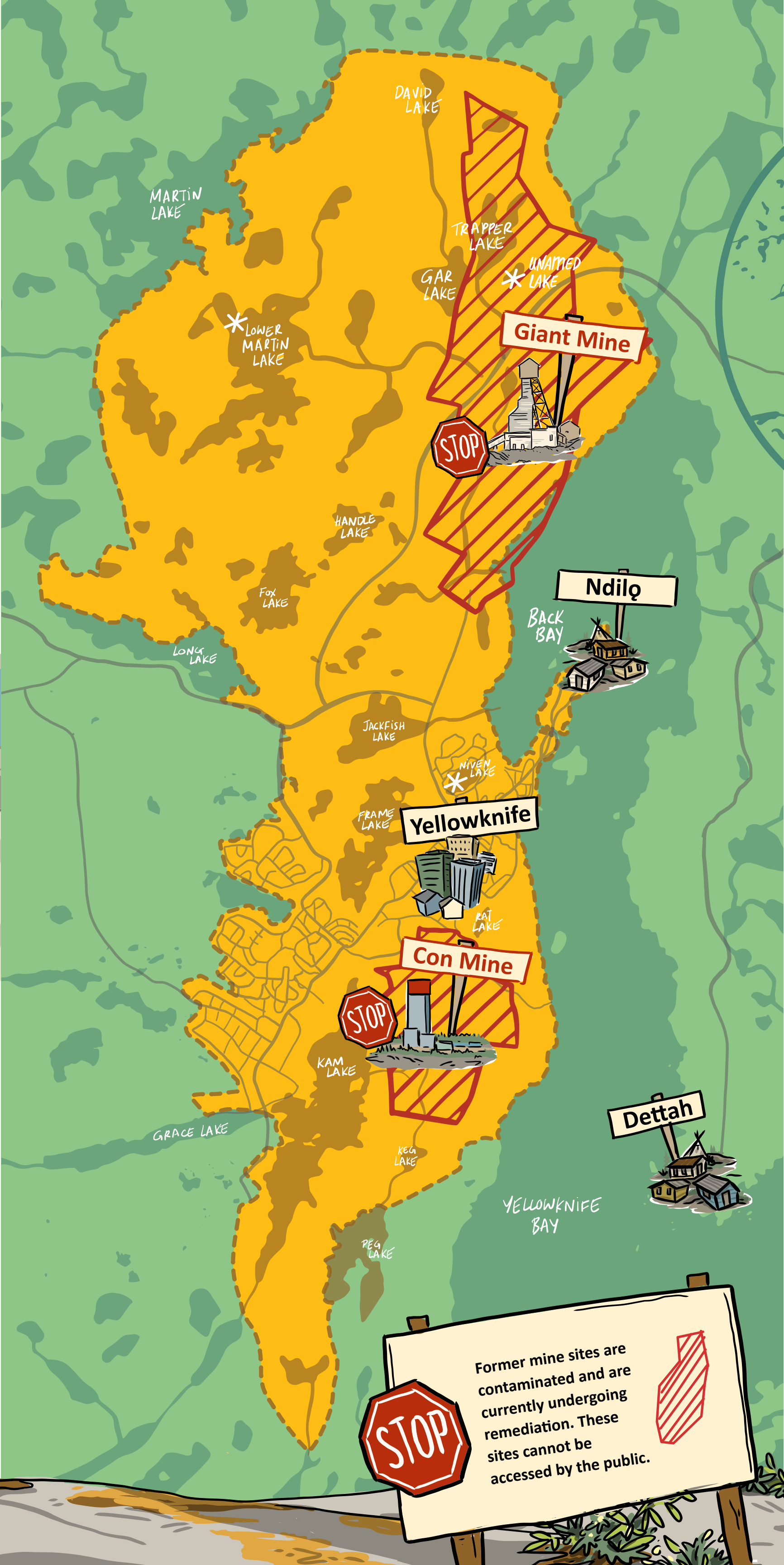
Arsenic and gold are often found together.

Arsenic is not hazardous to our health when it is trapped in the rocks.

Giant Mine and Con Mine operated in the Yellowknife area for several decades.

Arsenic was released from the rocks from roasting during mining. In extracting gold through mining and roasting, arsenic was released from the rocks in a different form called arsenic trioxide and was dispersed as dust into the environment.

In this form arsenic becomes more toxic for humans.



LOW RISK LAKES

1. BANTING LAKE
2. WALSH LAKE
3. VEE LAKE
4. MARTIN LAKE
5. LONG LAKE
6. LANDING LAKE
7. DUCK LAKE
8. MASON LAKE
9. YELLOWKNIFE RIVER
10. MADELINE LAKE
11. PRELUDE LAKE
12. PROSPEROUS LAKE

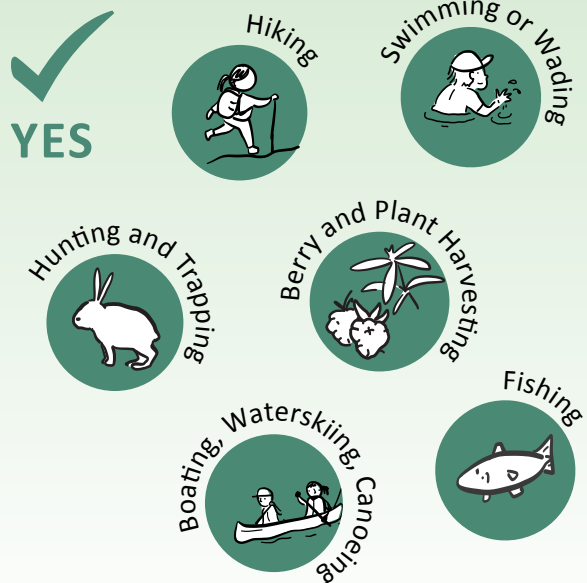
LAND USE

There have been many studies and a lot of monitoring. This has allowed us to identify where arsenic dust traveled from former mine sites. This map has been broken down into two zones to guide how you can safely use the land and water.

LOW RISK AREAS

Great Slave Lake, lakes east of Yellowknife, Ndiłq and Dettah and lakes further west past Landing Lake have low levels of arsenic. These areas are safe for swimming, boating, fishing, camping, hunting, berry picking and harvesting plants. Children should avoid getting sediment in their mouths. See the diagram below for mushroom picking.

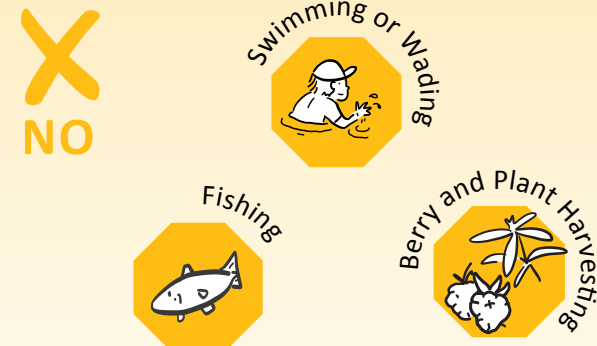
* Please refer to the other side for more details on drinking water from these lakes.



AREAS OF CONCERN

The areas around the old Giant Mine and Con Mine sites have higher levels of arsenic. You should not drink the water from lakes in this area. It is safe to canoe, hike, camp and hunt but swimming, wading, fishing, berry picking and harvesting plants should be avoided.

Lakes with stars have specific guidance; please refer to GNWT-Health and Social Services' website for more information <https://www.hss.gov.nt.ca/en/newsroom/arsenic-lake-water-around-yellowknife> or contact Environmental Health at: environmental_health@gov.nt.ca.



MUSHROOMS

Mushrooms should not be eaten if harvested within 10km of Giant and Con Mines. For mushroom harvesting advice outside of these areas, please refer to the other side for more details.

LAKES

Great Slave Lake (Back Bay and Yellowknife Bay):

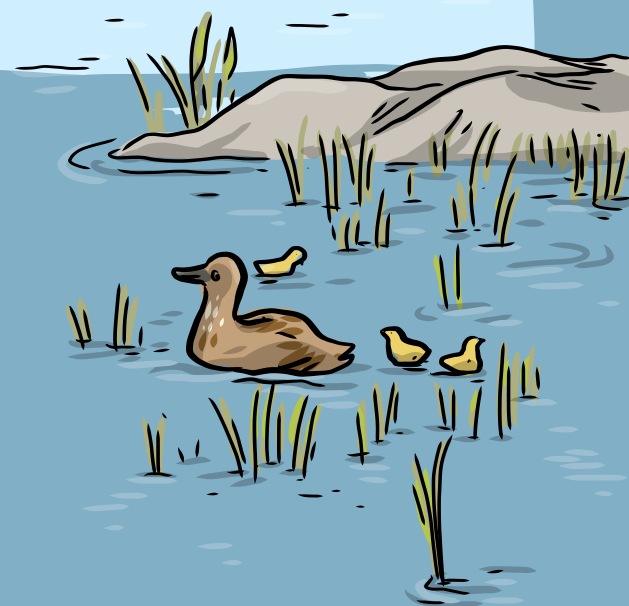
All types of recreational activities are safe including swimming and wading. It is also safe to fish. Children should not put mud or sediments in their mouths.

Kam Lake, Frame Lake, Jackfish Lake, Rat Lake, Peg Lake, Meg Lake, Fox Lake, Handle Lake, Gar Lake, David Lake, and others unnamed lakes near Giant Mine:

- It is not safe to fish from these lakes.
- People can enjoy boating, water skiing or canoe paddling on these lakes, and hiking in and around the area.
- These lakes have higher levels of arsenic so swimming, wading, fishing, berry and plant picking are not recommended. These lakes are clustered around the old Giant Mine and Con Mine sites.

Niven Lake:

People should not swim in Niven Lake as it was used as a sewage lagoon many years ago.



DRINKING WATER

Some lakes in the area have arsenic concentrations below drinking water quality guidelines; however, drinking untreated surface water is not recommended because of bacteria and viruses (E. coli from animal droppings, which can cause beaver fever) that can make you sick. Boiling water kills the bugs and germs that can make you sick.

Refer to GNWT Arsenic Advisory for the detailed breakdown of arsenic concentrations of lakes in the area: www.hss.gov.nt.ca/en/newsroom/arseniclake-water-around-yellowknife.

Some lakes in the area have arsenic concentrations above drinking water quality guidelines. Boiling water does not remove arsenic.



CITY WATER

The city drinking water in Yellowknife, Ndiłq and Dettah is safe and is always tested before it is provided to residents. Arsenic levels are below national drinking water quality guidelines.

For information or advice on water treatment options while out on the land, please contact Environmental Health at environmental_health@gov.nt.ca or at 867-767-9066 ext. 49262.



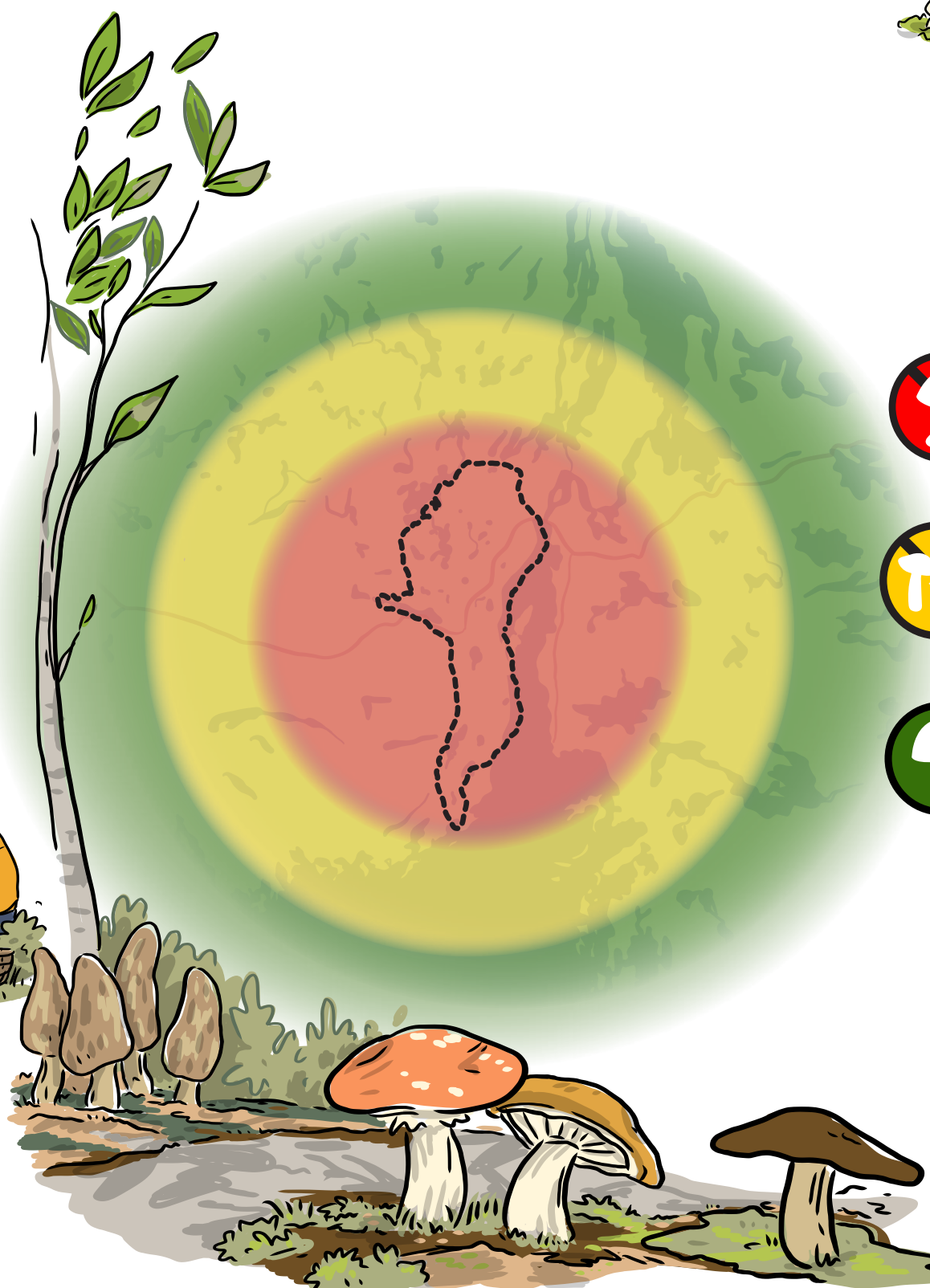
MUSHROOMS

It is not safe to eat mushrooms near Yellowknife, Ndiłq and Dettah within 10 km of Giant/Con Mines.

Mushrooms are different from other plants. They build up varying levels of arsenic based on their distances from the mine site. Outside of the 10km area around the two mines, it is safe to eat mushrooms, except for mushrooms from the Tricholomataceae family including Tricholoma "pine" mushrooms, Clitocybe "common funnel" mushrooms and White Matsutake mushrooms. These mushrooms should not be eaten within 25km of the Giant and Con Mine, however, at distances of 25km and greater it is safe to eat mushrooms as long as mushrooms are properly identified (please see harvesting advice). The same advice applies for chaga mushrooms harvesting in the area.

Here is some advice for first time mushroom pickers:

- First time mushroom pickers should go with an experienced person, especially when planning to eat what is gathered.
- Check the identity of your mushroom with an experienced harvester, buyer or biologist.
- Consult with a reputable mushroom field guide to compare species descriptions and contrast with potentially dangerous and poisonous lookalike species.



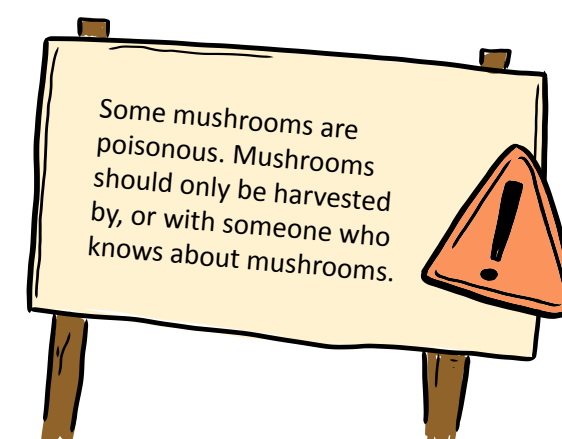
IN YELLOWKNIFE
(10km from Giant and Con Mines). Mushrooms are not safe to eat.



10KM FROM YELLOWKNIFE
Mushrooms are safe to eat except pine mushrooms and common funnel mushrooms (Tricholomataceae family)



25KM FROM YELLOWKNIFE
Mushrooms are safe to eat.



BERRY PICKING

People should avoid picking berries from areas close to the old Giant and Con mines. It is safe to pick berries at locations further away from the mine sites and roadways. The map on the other side of the poster shows these lower risk areas.

WILD GAME

Traditional foods are a healthy, and often preferred, alternative to supermarket foods. They are safe to eat if harvested from the Yellowknife, Ndiłq and Dettah area.

GARDEN VEGETABLES

It is safe to eat garden vegetables grown near Yellowknife, Ndiłq and Dettah. If you are buying soil for your garden locally, make sure that it has been tested and is acceptable for agricultural purposes. Be sure to wash all produce thoroughly prior to eating to remove soil and bacteria.



Arsenic

Yellowknife, Ndiłq & Dettah

Government of
Northwest Territories