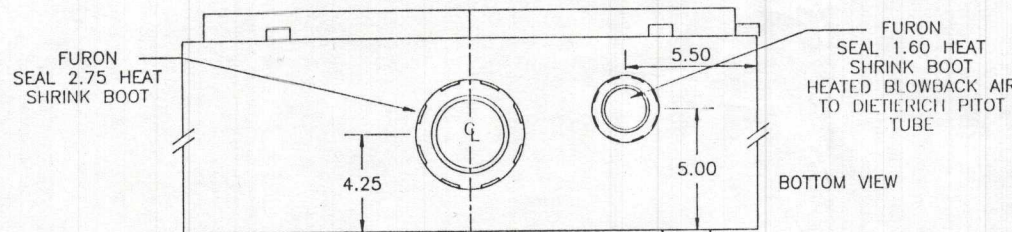
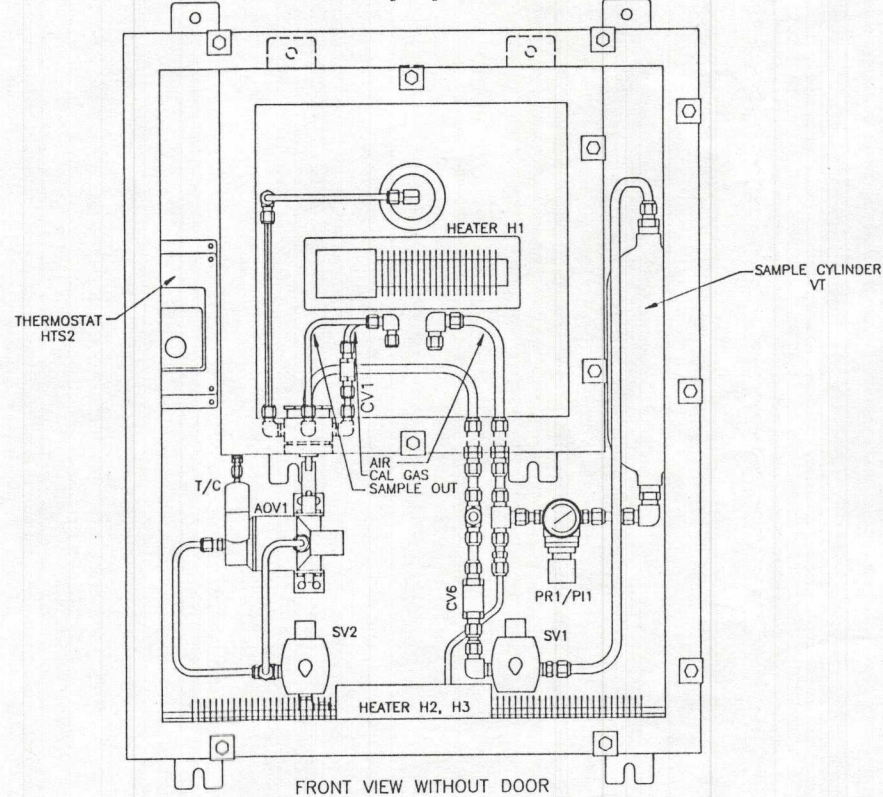
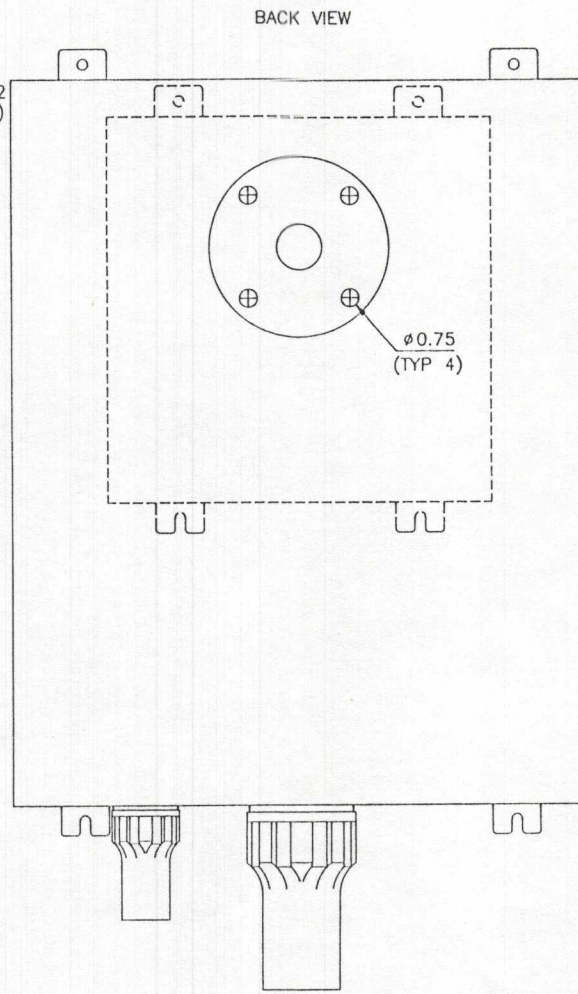
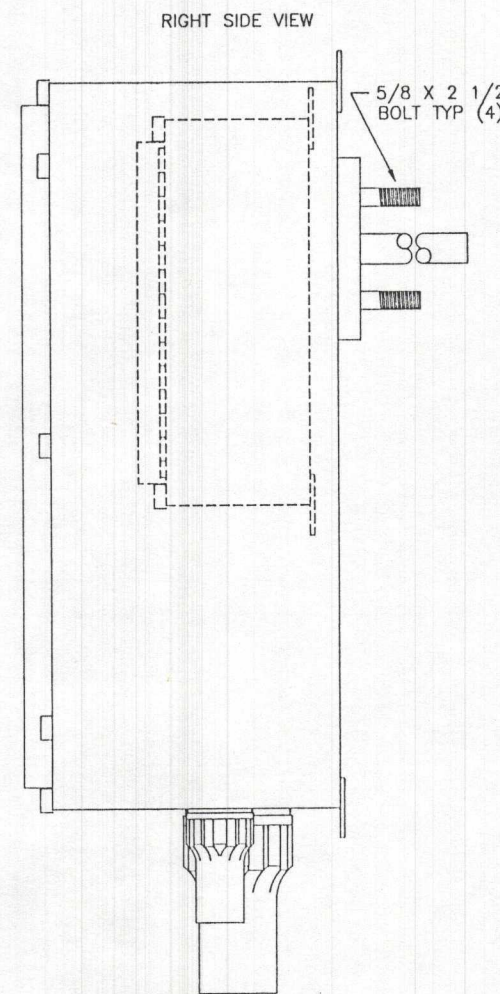
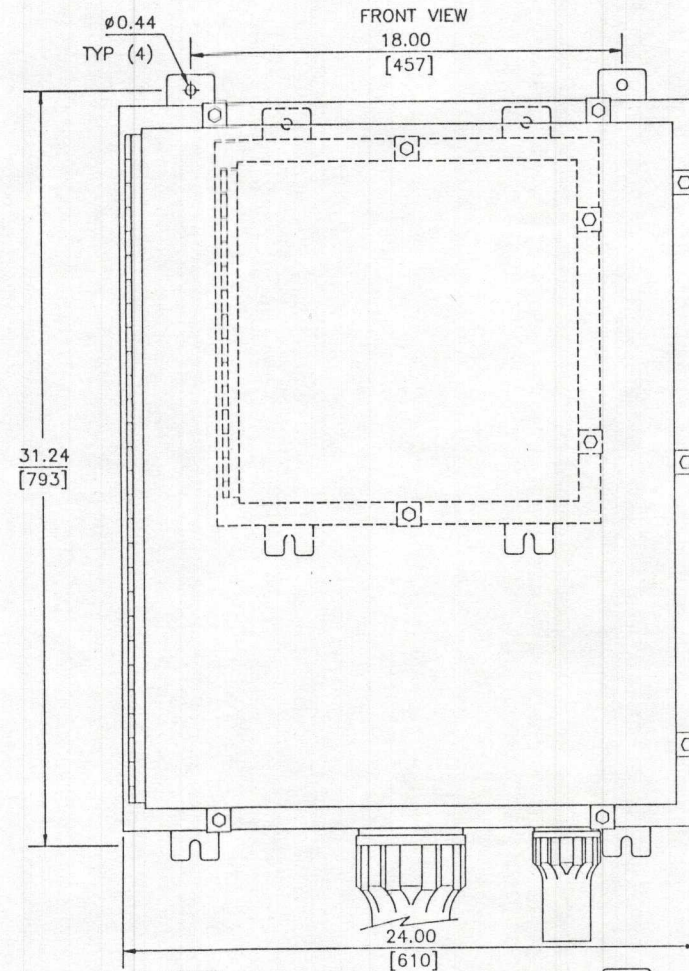
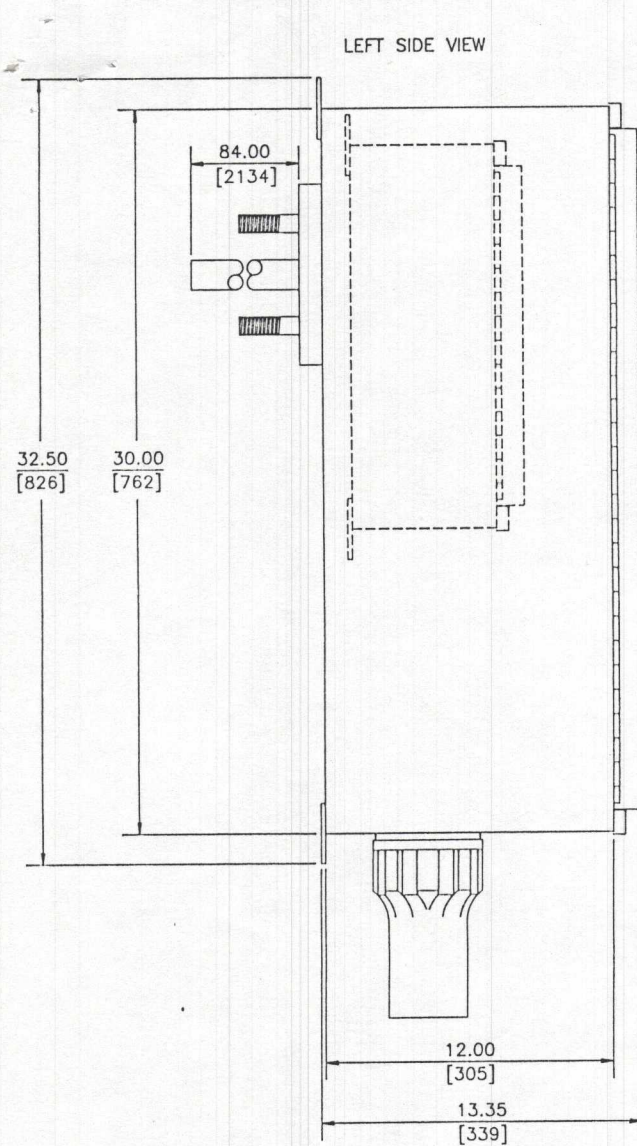


CHG	E.D. NO.	DATE	BY	ENGR
A	INITIAL	4-14-97	GRL	<i>[Signature]</i>
B	REV	5-7-97	GRL	<i>[Signature]</i>
C	REV	5-30-97	GRL	<i>[Signature]</i>
D	AS BUILT	6-18-97	GRL	<i>[Signature]</i>



- NOTES:
1. NEC AREA CLASSIFICATION:
 - ☒ NON-HAZARDOUS
 - ☐ CLASS I, DIVISION 2, GROUPS B, C & D
 - ☐ CLASS I, DIVISION 1, GROUPS B, C & D
 2. A GROUND STRAP IS TO BE CONNECTED BETWEEN MAIN FRAME ASSEMBLY/ENCLOSURE AND ALL DOORS/REMOVABLE TOPS, BASES, AND SIDE PANELS.
 3. LOCATION: ☐ INDOORS ☒ OUTDOORS
 4. ENCLOSURE: NEMA ___ (IEP___), ☒ INSULATED ☐ UNINSULATED
 5. RECOMMENDED AMBIENT TEMPERATURE LOCATION: -45°C TO 25°C (-50°F TO 77°F)
 6. ESTIMATED ENCLOSURE INTERIOR TEMPERATURE: 37°C/149°C (100°F/300°F)
 7. ENCLOSURE HEATED 27°C/149°C (80/300°F) ±11°C (±20°F)
 8. ESTIMATED WEIGHT: 250 LBS. (115 Kg)
 9. 1/4" INSULATION EXTERNAL BOX, 1/2" INSULATION INTERNAL BOX

REFERENCE DWG'S
D-775267 FLOW DIAGRAM
D-775268 O&MD
D-775269 WIRING DIAGRAM

1	HTS2		SELCO KHSO-120 THERMOSTAT
1	VT		HOKE 8LD1000 SAMPLE CYLINDER
1	CV6	902035	NUPRO SS-6C-1 CHECK VALVE
1	CV1	901503	NUPRO SS-4C-1 CHECK VALVE
1	PI	902222	WILKERSON GRP-95-228 PRESSURE GAUGE
1	PR1	902238	WILKERSON R00-02-L00 PRESS REGULATOR
1	SV2		ASCO 8340G1-120/60 4-WAY SOLENOID VALVE
1	T/C		J-TYPE THERMOCOUPLE OMEGA P/N 1CSS-18G-12
1	AOV		CONANT 4316-1/4 4-WAY VALVE WITH WHITEY MS-131-DA-HT AIR OPERATOR, MS-MB-43 MOUNTING BRACKET
1	SV1		ASCO 8320G201V-120/60 3-WAY SOLENOID VALVE
1			3" 150 LB RF FLANGE, 304SS
1	ST-1	775287	316SS MOTT PROBE WITH 0.5 MICRON FILTER TIP
1	HTS1		EXPANSION THERMOSTAT SELCO P/N KO-425
1			PROBE ENCLOSURE HOFFMAN P/N A-16H1606SS6LP
1			PROBE ENCLOSURE HOFFMAN P/N A-30H2412SS6LP

QTY	ITEM	P/N	DESCRIPTION	
	BY	DATE	Rosemount Analytical Inc. <small>ROSEMOUNT ANALYTICAL INC. LA HABRA, CALIFORNIA 90633</small>	
DR	G R LYEN	4-14-97		
ENGR	<i>[Signature]</i>	4-14-97	TITLE	
RMT CANADA ROYAL OAK MINES P.O. 5010667 ROSEMOUNT ANALYTICAL SY10206			O&MD PROBE BOX	
D SIZE		DWG NO. — 775270		
SCALE 1/4" = 1"			SHEET 1 OF 1	

MATERIAL
NEMA 4X
304 STAINLESS STEEL

FINISH

UNLESS OTHERWISE SPECIFIED

DIMENSIONS ARE IN INCHES/MILLIMETERS

TOLERANCES	
IN	MM
X .050	X ± 1.27
XX .020	XX ± 0.51
XXX .005	XXX ± 0.13

ANGLE/AREA/3" MACH SURF .125/.001/32 UN

UN 512 THREAD/LASS CLASS 2A ER/B

REMOVE BURRS & SHARP EDGES .02/.05

MACH FILLET RADIUS .020/0.5

MACH SURF FLAT WITHIN .005 m/in (.025 mm/mm)

OTHER SURF FLAT WITHIN .005 m/in (.025 mm/mm)

CENTRICITY MACH SURF

TIR WITHIN 1/2 MIN OF DIA TEL .001/325 MIN

DOT NOT SCALE DRAWING